

[2016-NEW! Free 70-410 485q Exam Dumps With New Update Exam Questions And Answers (Question 211 – Question 240)

Download the newest 70-410 vce dumps or 70-410 pdf dumps to prepare for Installing and Configuring Windows Server 2012 R2 Exam. Now, PassLeader has published the new 485q 70-410 exam dumps with PDF and VCE file download, PassLeader's 70-410 study guide with 485q 70-410 braindumps has been corrected all the questions and answers, also, all new 70-410 exam questions have been added, which will help you passing 70-410 exam easily. Download the 70-410 practice test with new questions from PassLeader quickly! keywords: 70-410 exam,485q 70-410 exam dumps,485q 70-410 exam questions,70-410 pdf dumps,70-410 practice test,70-410 vce dumps,70-410 study guide,70-410 braindumps,Installing and Configuring Windows Server 2012 R2 Exam P.S. Download Free 70-410 PDF Dumps and Preview PassLeader 70-410 VCE Dumps At The End Of This Post!!! (Ctrl+End)

QUESTION 211You work as an administrator at contoso.com. The contoso.com network consists of a single domain named contoso.com. Subsequent to deploying a Server Core Installation of Windows Server 2012 on a new contoso.com server, you are instructed to add a graphical user interface (GUI) to the server. You want to achieve this goal from the command prompt. Which of the following actions should you take? A. You should consider making use of the dism.exe command.B. You should consider making use of the dsquery.exe command.C. You should consider making use of the dsadd.exe command.D. You should consider making use of the dsrm.exe command. Answer: A

QUESTION 212Your network contains two Hyper-V hosts that run Windows Server 2012 R2. The Hyper-V hosts contains several virtual machines that run Windows Server 2012 R2. You install the Network Load Balancing feature on the virtual machines. You need to configure the virtual machines to support Network Load Balancing (NLB). Which virtual machine settings should you configure? A. Port mirroringB. DHCP guardC. Router guardD. MAC address Answer: D

QUESTION 213Your network contains an Active Directory forest that contains two domains. The forest contains five domain controllers. The domain controllers are configured as shown in the following table

Domain controller name	Domain
DC1	Contoso.com
DC2	Contoso.com
DC3	Eu.contoso.com
DC4	Eu.contoso.com
DC5	Eu.contoso.com

You need to configure DC5 as a global catalog server. Which tool should you use? A. Active Directory Domains and TrustsB. Active Directory Users and ComputersC. Active Directory Administrative CenterD. Active Directory Sites and Services Answer: D

QUESTION 214You work as an administrator at contoso.com. The contoso.com network consists of a single domain named contoso.com. All servers on the contoso.com network have Windows Server 2012 installed. You have received instructions to install the Remote Desktop Services server role on a server, named contoso-SR07. You want to achieve this remotely from a server, named contoso-SR06. Which of the following actions should you take? A. You should consider accessing the Server Manager console on contoso-SR07.B. You should consider accessing the Server Manager console on contoso-SR06.C. You should consider accessing the TS Manager console on contoso-SR07.D. You should consider accessing the TS Manager console on contoso-SR06. Answer: B

QUESTION 215Your network contains an Active Directory domain named contoso.com. The domain contains a server named Server1. Server1 runs Windows Server 2012 R2. You need to create 3-TB virtual hard disk (VHD) on Server1. Which tool should you use? A. File Server Resource Manager (FSRM)B. New-StoragePoolC. DiskpartD. Share and Storage Management Answer: C

QUESTION 216Your network contains an Active Directory domain named contoso.com. The domain contains a server named Server1 that runs Windows Server 2012 R2. You create a new inbound rule by using Windows Firewall with Advanced Security. You need to configure the rule to allow Server1 to accept unsolicited inbound packets that are received through a network address translation (NAT) device on the network. Which setting in the rule should you configure? A. Edge traversalB. Authorized computersC. Interface typesD. Remote IP address Answer: A

QUESTION 217Drag and Drop QuestionYou have a server named Server1 that runs Windows Server 2012 R2. You need to create a new volume on Server1. The new volume must have the following configurations:- Be stored on a new virtual hard disk- Be assigned the drive letter G- Have the NTFS file systemIn which order should you run the Diskpart commands? To answer, move all the Diskpart commands from the list of commands to the answer area and arrange them in the correct order.

Diskpart Commands	Answer Area
create vdisk	
attach vdisk	
assign	
format	
create partition	

Answer:

Diskpart Commands	Answer Area
create vdisk	create vdisk
attach vdisk	attach vdisk
assign	create partition
format	assign
create partition	format

QUESTION 218Hotspot QuestionYour network contains an Active Directory domain named contoso.com. The network contains a DHCP server named DHCP1. You add a new network segment to the network. On the new network segment, you deploy a new server named Server1 that runs Windows Server 2012 R2. You need to configure Server1 as a DHCP Relay Agent. Which server role should you install on Server1? To answer, select the appropriate role in the answer area

Add Roles and Features Wizard

Select server roles

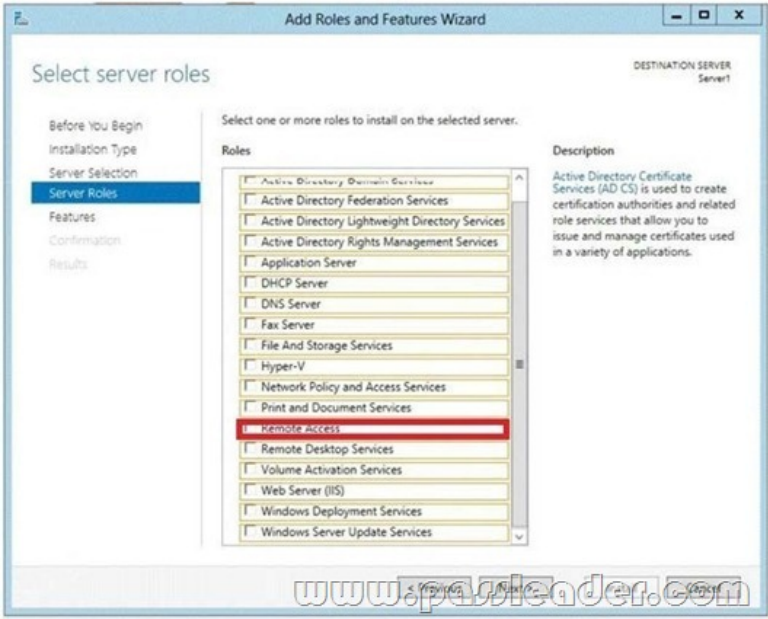
Before You Begin
Installation Type
Server Selection
Server Roles
Features
Confirmation
Results

Select one or more roles to install on the selected server.

Roles

- ☐ Active Directory Domain Services
- ☐ Active Directory Federation Services
- ☐ Active Directory Lightweight Directory Services
- ☐ Active Directory Rights Management Services
- ☐ Application Server
- ☐ DHCP Server
- ☐ DNS Server
- ☐ Fax Server
- ☐ File And Storage Services
- ☐ Hyper-V
- ☐ Network Policy and Access Services
- ☐ Print and Document Services
- ☐ Remote Access
- ☐ Remote Desktop Services
- ☐ Volume Activation Services
- ☐ Web Server (IIS)
- ☐ Windows Deployment Services
- ☐ Windows Server Update Services

Answer:



QUESTION 219 You work as an administrator at contoso.com. The contoso.com network consists of a single domain named contoso.com. All servers on the contoso.com network have Windows Server 2012 installed. You are in the process of installing a Server Core installation of Windows Server 2012 on a new contoso.com server, named contoso-SR13. Which of the following is TRUE with regards to a installing a Server Core installation of Windows Server 2012? (Choose all that apply.) A. The Server Graphical Shell is installed, but not enabled. B. Server roles can be configured locally via the command prompt using Windows PowerShell. C. Server roles can be configured locally via Server Manager. D. You are able to access the Microsoft Management Console locally. E. The Desktop Experience is not available. Answer: BE

QUESTION 220 You have a server named Server1 that runs a Server Core installation of Windows Server 2012 R2. Server1 is configured to obtain an IPv4 address by using DHCP. You need to configure the IPv4 settings of the network connection on Server1 as follows:- IP address: 10.1.1.1- Subnet mask: 255.255.240.0- Default gateway: 10.1.1.254 What should you run? A. Set-NetIPInterface B. netcfg.exe C. New-NetIPAddress D. msconfig.exe Answer: C

QUESTION 221 Your network contains an Active Directory domain named adatum.com. The domain contains the servers shown in the following table.

Server name	Operating system	Configuration
DC1	Windows Server 2012 R2	Domain controller
DC2	Windows Server 2008 R2 Service Pack 1 (SP1)	Domain controller
Server1	Windows Server 2008 R2 Service Pack 1 (SP1)	File server
Server2	Windows Server 2012 R2	File server

You need to ensure that you can use Server Manager on DC1 to manage DC2. Which two tasks should you perform? (Each correct answer presents part of the solution. Choose two.) A. Install Microsoft .NET Framework 4 on DC2. B. Install Remote Server Administration Tools on DC1. C. Install the Windows PowerShell 2.0 engine on DC1. D. Install Remote Server Administration Tools on DC2. E. Install Windows Management Framework 3.0 on DC2. Answer: AE

QUESTION 222 You have a file server named Server1 that runs Windows Server 2012 R2. Server1 contains a folder named Folder1. You share Folder1 as Share1 by using Advanced Sharing. Access-based enumeration is enabled. Share1 contains an application named Appl.exe. You configure the NTFS permissions on Folder1 as shown in the following table.

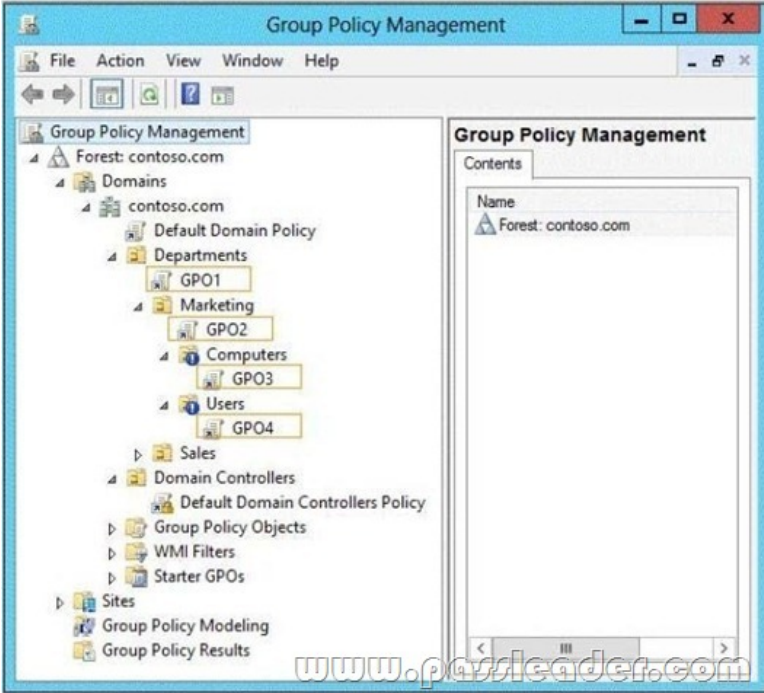
Group name	NTFS permission
Group1	Read & Execute
Group2	Read & Execute, Write

The members of Group2 report that they cannot make changes to the files in Share1. The members of Group1 and Group2 run Appl.exe successfully. You need to ensure that the members of Group2 can edit the files in Share1. What should you do? A. Edit the Share permissions. B. Disable access-based enumeration. C. Replace the NTFS permissions on all of the child objects. D. Edit the NTFS permissions. Answer: A

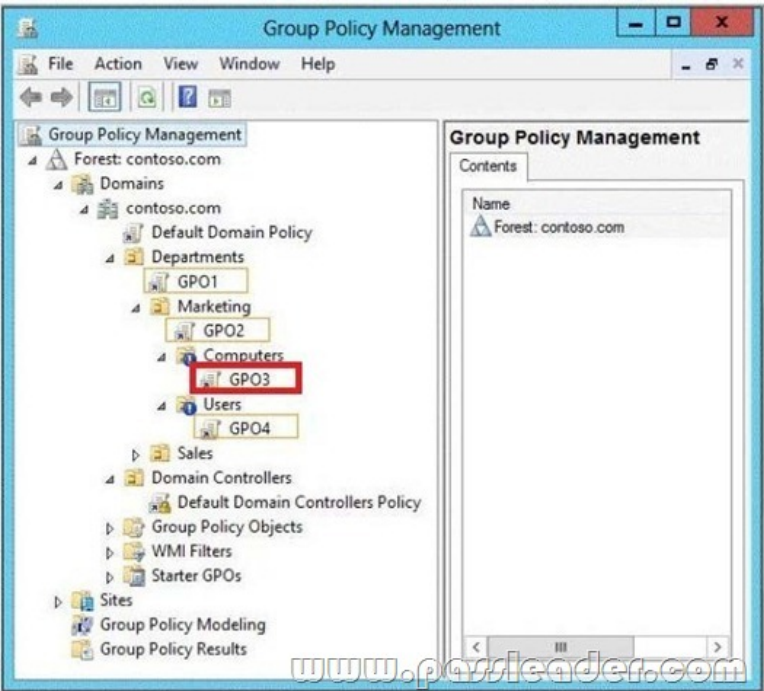
QUESTION 223 Your network contains an Active Directory domain named contoso.com. The domain contains a server named Server1. Server1 runs Windows Server 2012 R2 and has the Hyper-V server role installed. On Server1, you create and start a virtual machine named VM1. VM1 is configured as shown in the following table.

Setting	Configuration
Minimum RAM	2048 MB
Maximum RAM	4096 MB
Disk type	Fixed size
Disk size	100 GB

You need to recommend a solution to minimize the amount of disk space used for the snapshot of VM1. What should you do before you create the snapshot? A. Convert disk1.vhd to a dynamically expanding disk.B. Shutdown VM1.C. Decrease the Minimum RAM.D. Decrease the Maximum RAM. Answer: B QUESTION 224Hotspot QuestionYour network contains an Active Directory domain named contoso.com. Computer accounts for the marketing department are in an organizational unit (OU) namedDepartmentsMarketingComputers. User accounts for the marketing department are in an OU named DepartmentsMarketingUsers. Marketing users can only log on to the client computers in the DepartmentsMarketingComputers OU. You need to apply an application control policy to all of the marketing users. Which Group Policy Object (GPO) should you configure? To answer, select the appropriate GPO in the answer area.



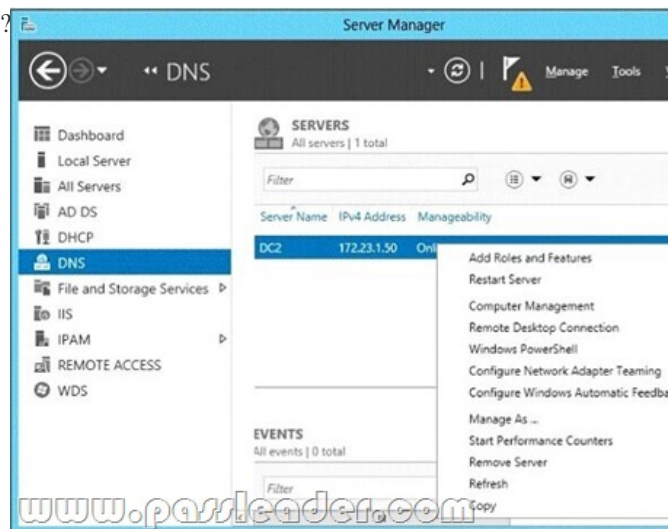
Answer:



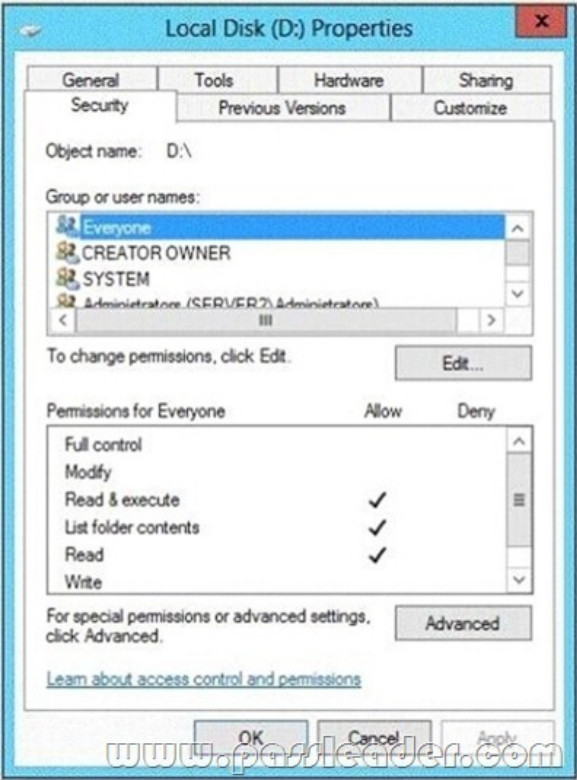
QUESTION 225Your network contains an Active Directory domain named contoso.com. The domain contains a server named Server 1. Server1 runs Windows Server 2012 R2. You need to create 3-TB virtual hard disk (VHD) on Server1. Which tool should you use? A. New-StorageSubsytemVirtualDiskB. Share and Storage ManagementC. Computer ManagementD. File Server Resource Manager (FSRM) Answer: C **QUESTION 226**Your network contains an Active Directory domain named contoso.com. All servers run Windows Server 2012 R2. When a domain user named User3 attempts to log on to a client computer named Client10, User3 receives the message shown in the following exhibit. (Click the Exhibit button.)



You need to ensure that User3 can log on to Client10. What should you do? A. From Active Directory Users and Computers, configure the Logon Workstations setting of User3.B. On Client10, modify the Allow log on locally User Rights Assignment.C. From Active Directory Users and Computers, configure the Personal Virtual Desktop property of User3.D. On Client10, modify the Deny log on locally User Rights Assignment. Answer: A **QUESTION 227**Your network contains an Active Directory domain named contoso.com. The domain contains a member server named Server1 and a domain controller named DC2. All servers run Windows Server 2012 R2. All domain controllers are configured as DNS servers. On Server1, you open Server Manager and you add DC2 as another server to manage. From Server Manager on Server2, you right-click DC2. You need to ensure that when you right-click DC2, you see the option to run DNS Manager. What should you do?



A. In the domain, add Server1 to the DNS Admins group.B. On DC2 and Server1, run winrmquickconfig.C. On DC2, install the Feature Administration Tools.D. On Server1, install the Role Administration Tools. Answer: D **QUESTION 228**You have a server named Server1 that runs Windows Server 2012 R2. A network technician installs a new disk on Server1 and creates a new volume. The properties of the new volume. You need to ensure that you can restore files on volume D by using the Previous Versions tab. What should you do first?

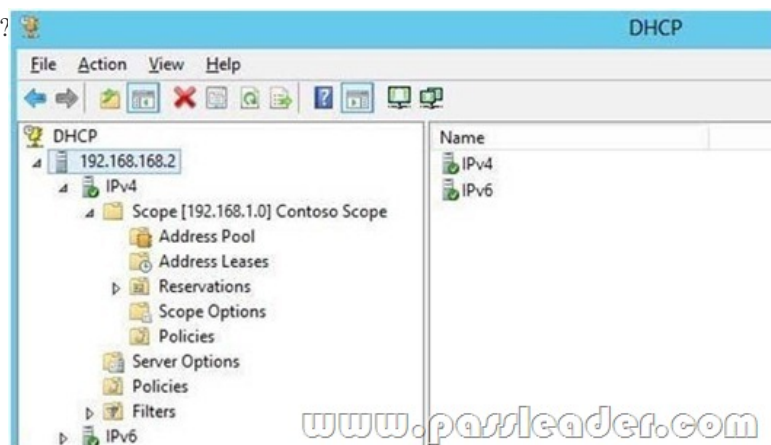


A. Convert the disk to a dynamic disk.B. Format volume D.C. Install the File Server Resource Manager role service.D. Run the convert.exe command. Answer: B QUESTION 229Your network contains an Active Directory domain named contoso.com. The domain contains a server named Server1. Server1 runs Windows Server 2012 R2 and has the Hyper-V server role installed. On Server1, you create and start a virtual machine named VM1.

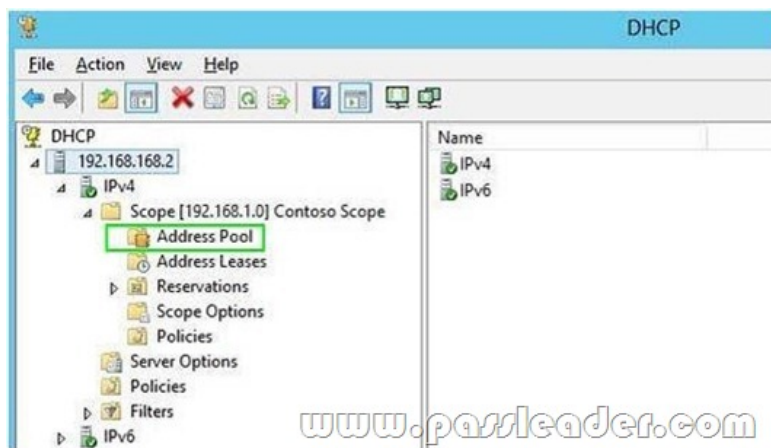
Setting	Configuration
Minimum RAM	2048 MB
Maximum RAM	4096 MB
Disk type	Fixed size
Disk size	100 GB

VM1 is configured as shown in the following table. You plan to create a snapshot of VM1. You need to recommend a solution to minimize the amount of disk space used for the snapshot of VM1. What should you do before you create the snapshot? A. Shut down VM1.B. Decrease the Minimum RAM.C. Decrease the Maximum RAM.D. Configure VM1 to have a smaller virtual disk.E. Convert disk1.vhd to a dynamically expanding disk.F. Run the Stop-VM cmdlet.G. Run the Resize-VHD cmdlet.H. Run the Convert-VHD cmdlet. Answer: AF QUESTION 230Your network contains an Active Directory domain named contoso.com. The domain contains a server named Server1. Server1 runs Windows Server 2012 R2. You need to create 3-TB virtual hard disk (VHD) on Server1. Which tool should you use? A. DiskpartB. Server ManagerC. Computer ManagementD. New-VirtualDiskE. Share and Storage ManagementF. File Server Resource Manager (FSRM)G. New-StorageSubsytemVirtualDiskH. New-StoragePool Answer: AC QUESTION 231Your network contains an Active Directory domain named contoso.com. The domain contains two servers named Server1 and Server2. Server1 runs Windows Server 2012 R2. Server2 runs Windows Server 2008 R2 Service Pack 1 (SP1) and has the DHCP Server server role installed. You need to manage DHCP on Server2 by using the DHCP console on Server1. What should you do first? A. From Server Manager on Server2, enable Windows Remote Management.B. From a command prompt on Server2, run winrm.exe.C. From Server Manager on Server1, install a feature.D. From the Microsoft Management Console on Server1, add a snap-in. Answer: C QUESTION 232Your network contains a production Active Directory forest named contoso.com and a test Active Directory forest named contoso.test. A trust relationship does not exist between the forests. In the contoso.test domain, you create a backup of a Group Policy object (GPO) named GPO1. You transfer the backup of GPO1 to a domain controller in the contoso.com domain. You need to create a GPO in contoso.com based on the settings of GPO1. You must achieve this goal by using the minimum amount of administrative effort. What should you do? A. From Group Policy Management, right-click the Group Policy Objects container, and then click Manage

Backups.B. From Group Policy Management, right-click the Starter GPOscontainer, and then click Manage Backups.C. From Group Policy Management, create a new starter GPO. Right-click the new starter GPO, and then click Restore from Backup.D. From Group Policy Management, create a new GPO. Right-click the new GPO, and then click Import Settings.E. From Windows PowerShell, run the Copy-GPOcmdlet and the Restore-GPOcmdlet.F. From Windows PowerShell, run the New-GPOcmdlet and the Import-GPOcmdlet.G. From Windows PowerShell, run the New-GPOcmdlet and the Restore-GPOcmdlet.H. From Windows PowerShell, run the Get-GPOcmdlet and the Copy-GPOcmdlet. Answer: DF QUESTION 233You work as an administrator at contoso.com. The contoso.com network consists of a single domain named contoso.com. All servers on the contoso.com network have Windows Server 2012 R2 installed. You have received instructions to convert a basic disk to a GPT disk. Which of the following is TRUE with regards to GPT disks? (Choose all that apply.) A. To convert a basic disk to a GPT disk, the disk must not contain any partitions or volumes.B. You can convert a basic disk to a GPT disk, regardless of partitions or volumes.C. GPT is required for disks larger than 2 TB.D. GPT is required for disks smaller than 2 TB.E. The GPT partition style can be used on removable media.F. GPT disks make use of the standard BIOS partition table. Answer: AC QUESTION 234Server1 runs Windows Server 2012 R2 and is installed as an FTP server. Client use App1 to connect to Server1 for FTP. App1 use TCP port 21 for control and a dynamic port for data. You have allowed port 21 in firewall. What you should next do to allow clients to use App1 to connect to server1 using ftp. A. At Server1 allow firewall rule of outboundB. At Server1 allow firewall rule of inboundC. Netsh advfirewall domainprofile state offD. Netsh advfirewall set global StatefulFtp enable Answer: D QUESTION 235You have a server named Server1 that runs Windows Server 2012 R2. You plan to enable Hyper-V Network Visualization on Server1. You need to install the Windows Network Virtualization Filter Driver on Server1. Which Windows PowerShell cmdlet should you run? A. Set-NetVirtualizationGlobalB. Set-NetAdapterVmqC. Add-WindowsFeatureD. Enable-NetAdapterBinding Answer: D QUESTION 236A company has a forest with 4 sites. Subnets are as follows:- MainOffice 172.16.1.0 Subnet: 255.255.255.0 Gateway 172.16.1.254- Site1 192.168.12.0 Subnet: 255.255.255.0- Site 2 192.168.13.0 Subnet: 255.255.255.0- Site 3 192.168.14.0 Subnet: 255.255.255.0- Site 4 192.168.15.0 Subnet: 255.255.255.0You add a new server to the MainOffice and it needs to be able to communicate to all sites. Which route command would you run? A. route add -p 192.168.8.0 netmask 255.255.252.0 172.16.1.254 B. route add -p 192.168.0.0 netmask 255.255.248.0 172.16.1.254C. route add -p 192.168.12.0 netmask 255.255.252.0 172.16.1.254D. route add -p 192.168.12.0 netmask 255.255.240.0 172.16.1.254 Answer: C QUESTION 237Server 1 and Server2 host a load-balanced Application pool named AppPool1. You need to ensure thatAppPool1 uses a group Managed Service Account as its identity. Which 3 actions should you perform? A. Install a domain controller that runs Windows Server 2012 R2, Run the New- ADServiceAccountcmdlet, Modify the settings of AppPool1.B. Configure the Security settings of the contoso.com zone.C. Add a second legacy network adapter, and then run the Set-VMNetworkAdoptercmdlet.D. From Windows Powershell, run Get-DNSServerDiagnostics. Answer: A QUESTION 238Hotspot QuestionYou run a Windows Server 2012 R2and implementing 3 new printers in a warehouse. You need to makean exclusion forthese IP addresses within DHCP server. Select the location where would configure at the DHCP console?



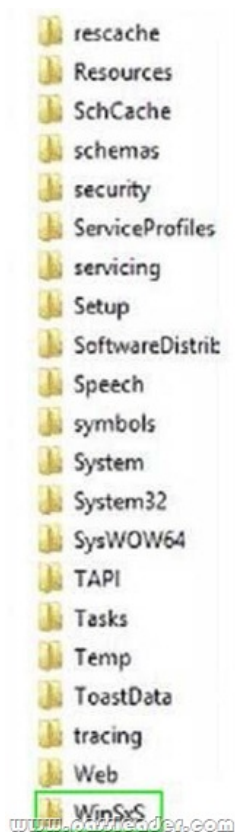
Answer:



QUESTION 239
Hotspot Question
You have a Server Core 2012 installation and all roles and features removed. The server does not have access to Windows Update. You mount the network volume containing the installation files for Server 2012. You need to install DNS and DHCP server role. Which directory do you reference for installing?



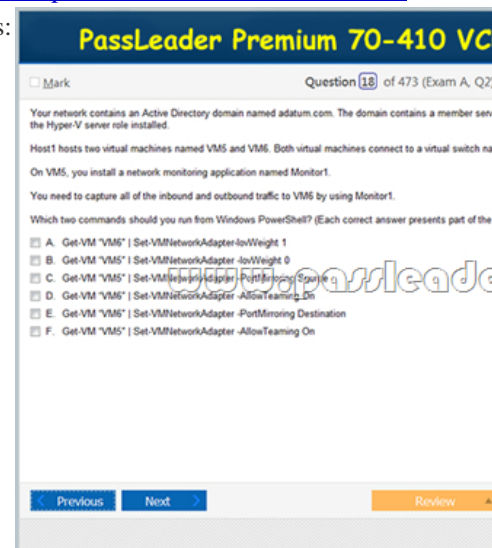
Answer:



QUESTION 240 Server1 runs Windows Server 2012 R2 and is installed as an FTP server. Client use App1 to connect to Server1 for FTP. App1 use TCP port 21 for control and a dynamic port for data. You have allowed port 21 in firewall. What you should next do to allow clients to use App1 to connect to server1 using ftp. A. At Server1 allow firewall rule of outbound B. At Server1 allow firewall rule of inbound C. netsh advfirewall firewall add rule name "FTP" dir=in action=allow protocol=TCP localport=21 remoteport=& netsh advfirewall firewall set global StatefulFtp enable Answer: D

Download Free 70-410 PDF Dumps From Google Drive:

https://drive.google.com/open?id=0B-ob6L_QjGLpfnJzOE1fWnlJOWVtaE93SnJNT3gtatNYNpVpZkw5THBSMWRKbFlfaXh1azg (Explanation For Every Question Is Available!) PassLeader 70-410 VCE Dumps Screenshots:



PassLeader Premium 70-410 VCE Dumps Preview

☐ Mark

Question 27 of 473 (Exam A, Q7)

Instructions

HOTSPOT
You have a Hyper-V host named Hyperv1 that runs Windows Server 2012 R2. Hyperv1 hosts a virtual machine named Server1. Server1 uses a disk named Server1.vhdx that is stored locally on Hyperv1.

You stop Server1, and then you move Server1.vhdx to an iSCSI target that is located on another server.

You need to configure Server1 to meet the following requirements:

- Ensure that Server1 can start by using Server1.vhdx.
- Prevent Server1.vhdx from consuming more than 500 IOPS on the iSCSI target.

Settings for SERVER1 on SERVER1

SERVER1

Hardware

Add Hardware

Firmware

Memory

Processor

Compatibility

NUMA

SCSI Controller

Hard Drive

Boot from File

2024 MB

3 Virtual processor

Compatibility

NUMA

SCSI Controller

Hard Drive

Previous

Next

Review

Show Answer

Show List

Save Session

End Exam

Download New 70-410 VCE Dumps From PassLeader: <http://www.passleader.com/70-410.html> (New Questions Are 100% Available and Wrong Answers Have Been Corrected!!!)