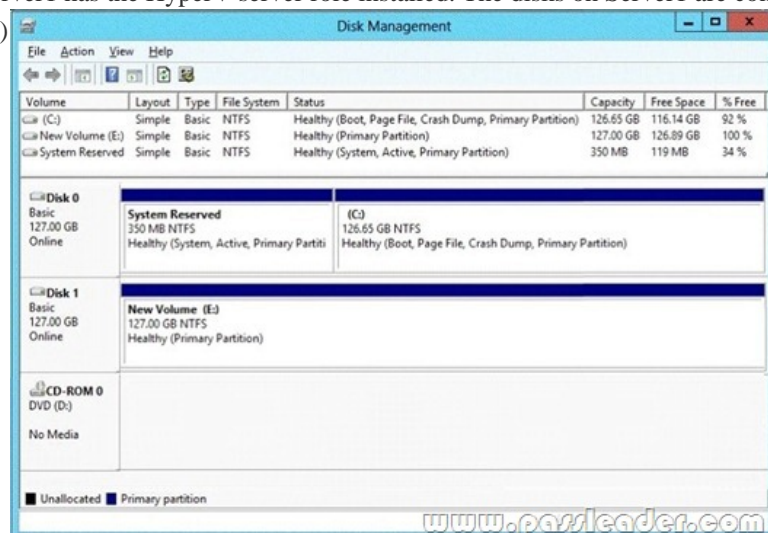


[2016-NEW! Professional 612q 70-417 Braindump For Free Download Now (Question 31 – Question 60)

100% Valid Dumps For 70-417 Exam Passing: PassLeader have been updated the 612q 70-417 exam dumps and added the new exam questions, in the newest version of 70-417 PDF dumps and 70-417 VCE dumps, you will get all the new updated 70-417 exam questions, which will help you 100% passing 70-417 exam, and you will get the free version of VCE simulator together with your 70-417 VCE dumps. Welcome to visit our website -- [passleader.com](#) and get your 70-417 exam passed easily! keywords: 70-417 exam,612q 70-417 exam dumps,612q 70-417 exam questions,70-417 pdf dumps,70-417 vce dumps,70-417 study guide,70-417 practice test,Upgrading Your Skills to MCSA Windows Server 2012 R2 Exam P.S. Download Free 70-417 PDF Dumps and Preview PassLeader 70-417 VCE Dumps At The End Of This Post!!! (Ctrl+End) QUESTION 31Your network contains an Active Directory domain named contoso.com. The domain contains a domain controller named DC5. DC5 has a Server Core Installation of Windows Server 2012 R2. You need to uninstall Active Directory from DC5 manually. Which tool should you use? A. The ntdsutil.exe commandB. The dcpromo.exe commandC. The Remove-WindowsFeaturecmdletD. The Remove-ADComputercmdlet Answer: A QUESTION 32Your network contains an Active Directory domain named adatum.com. The domain contains several thousand member servers that run Windows Server 2012 R2. All of the computer accounts for the member servers are in an organizational unit (OU) named ServersAccounts. Servers are restarted only occasionally. You need to identify which servers were restarted during the last two days. What should you do? A. Run dsquery computer and specify the -sra /epwc parameter.B. Run Get-ADComputer and specify the SearchScope parameter.C. Run dsquery server and specify the -o parameter.D. Run Get-ADComputer and specify the lastLogon property Answer: D QUESTION 33Your network contains an Active Directory domain named adatum.com. The domain contains three domain controllers. The domain controllers are configured as shown in the following table.

Name	Operating system	Additional server roles
DC1	Windows Server 2008 R2	DNS Server
DC2	Windows Server 2012 R2	DNS Server
DC3	Windows Server 2012 R2	None

DC3 loses network connectivity due to a hardware failure. You plan to remove DC3 from the domain. You log on to DC3. You need to identify which service location (SRV) records are registered by DC3. What should you do? A. Open the %windir%system32dnsbackupadatum.com.dns file.B. Run ipconfig /displaydn*.C. Run dcdiag /test:dns.D. Open the %windir%system32confignetlogon.dns file. Answer: D QUESTION 34You have a server named Server1 that runs Windows Server 2012 R2. Server1 has the HyperV server role installed. On Server1, you create a virtual machine named VM1. VM1 has a legacy network adapter. You need to assign a specific amount of available network bandwidth to VM1. What should you do first? A. Add a second legacy network adapter, and then configure network adapter teaming.B. Remove the legacy network adapter, and then run the Set-VMNetworkAdaptercmdlet.C. Remove the legacy network adapter, and then add a network adapter.D. Add a second legacy network adapter, and then run the Set-VMNetworkAdaptercmdlet. Answer: C QUESTION 35You have a server named Server1 that runs Windows Server 2012 R2. Server1 has the HyperV server role installed. The disks on Server1 are configured as shown in the exhibit. (Click the Exhibit button.)



You create a virtual machine on Server1. You need to ensure that you can configure a pass-through disk for the virtual machine. What should you do? A. Convert Disk 1 to a dynamic disk.B. Delete partition E.C. Convert Disk 1 to a GPT disk.D. Take Disk 1 offline. Answer: D QUESTION 36Your company's security policy states that all of the servers deployed to a branch office must not have the graphical user interface (GUI) installed. In a branch office, a support technician installs a server with a GUI installation of Windows Server 2012 R2 on a new server, and then configures the server as a DHCP server. You need to ensure that the new server meets the security policy. You want to achieve this goal by using the minimum amount of administrative effort. What should you do? A. From Server Manager, uninstall the User Interfaces and Infrastructure feature.B. Reinstall Windows Server 2012 R2on the server.C. From Windows PowerShell, run Uninstall-WindowsFeature Desktop-Experience.D. From Windows PowerShell, run Uninstall-WindowsFeature PowerShell-ISE. Answer: A QUESTION 37You have 3 server that runs Windows Server 2012 R2. The server contains the disks configured as shown in the following table.

Disk name	Partition table type	Disk storage type	Unallocated space
Disk 0	GPT	Dynamic	2 TB
Disk 1	MBR	Basic	4 TB
Disk 2	GPT	Dynamic	4 TB
Disk 3	GPT	Dynamic	4 TB
Disk 4	MBR	Basic	2 TB

You need to create a volume that can store up to 3 TB of user files. The solution must ensure that the user files are available if one of the disks in the volume fails. What should you create? A. A storage pool on Disk 2 and Disk 3B. A mirrored volume on Disk 2 and Disk 3C. A storage pool on Disk 1 and Disk 3D. A mirrored volume on Disk 1 and Disk 4E. Raid 5 Volume out of Disks 1, 2 and 3 Answer: B QUESTION 38You have a server named Corel that has a Server Core Installation of Windows Server 2012 R2. Corel has the Hyper-V server role installed. Corel has two network adapters from different third-party hardware vendors. You need to configure network traffic failover to prevent connectivity loss if a network adapter fails. What should you use? A. netsh.exeB. Install-FeatureC. New-NetSwitchTeamD. Add -Nets witchTeamMember Answer: C QUESTION 39You have a server named Server1 that runs Windows Server 2012 R2. Server1 has five network adapters. Three of the network adapters are connected to a network named LAN1. The two other network adapters are connected to a network named LAN2. You need to create a network adapter team from the three network adapters connected to LAN1. Which tool should you use? A. Routing and Remote AccessB. Network Load Balancing ManagerC. Network and Sharing CenterD. Server Manager Answer: D QUESTION 40Your network contains a server named Server1 that runs Windows Server 2012 R2. Server1 has the Hyper-V server role installed. Server1 hosts four virtual machines named VM1, VM2, VM3, and VM4. Server1 is configured as shown in the following table.

Hardware component
Processor
Memory
Disk
Network

You need to ensure that VM1 can use more CPU time than the other virtual machines when the CPUs on Server1 are under a heavy load. What should you configure? A. NUMA topologyB. Resource controlC. Resource meteringD. Virtual Machine ChimneyE. The VLAN IDF. Processor CompatibilityG. The startup orderH. Automatic Start ActionI. Integration Services J. Port mirroringK. Single-root I/O visualization Answer: B QUESTION 41Your network contains a server named Server1 that runs Windows Server 2012 R2. Server1 has the Hyper-V server role installed. Server1 hosts four virtual machines named VM1, VM2, VM3, and VM4. Server1 is configured as shown in the following table.

Hardware component	Configuration
Processor	Eight quad-core CPUs that have non-uniform memory access (NUMA)
Memory	32 GB of RAM
Disk	Two local 4-TB disks
Network	Eight network adapters VMQ-supported PCI-SIG-supported

You install a network monitoring Application on VM2. You need to ensure that all of the traffic sent to VM3 can be captured on VM2. What should you configure? A. NUMA topologyB. Resource controlC. Resource meteringD. Virtual Machine ChimneyE. The VLAN IDF. Processor CompatibilityG. The startup orderH. Automatic Start ActionI. Integration ServicesJ. Port mirroringK. Single-root I/O virtualization Answer: J QUESTION 42Your network contains a server named Server1 that runs Windows Server 2012 R2. Server1 has the Hyper-V server role installed. Server1 hosts four virtual machines named VM1, VM2, VM3, and VM4. Server1 is configured as shown in the following table.

Hardware component	Configuration
Processor	Eight quad-core CPUs that have non-uniform memory access (NUMA)
Memory	32 GB of RAM
Disk	Two local 4-TB disks
Network	Eight network adapters VMQ-supported PCI-SIG-supported

You need to configure VM4 to track the CPU, memory, and network usage. What should you configure? A. NUMA topologyB. Resource controlC. Resource meteringD. Virtual Machine ChimneyE. The VLAN IDF. Processor CompatibilityG. The startup orderH. Automatic Start ActionI. Integration ServicesJ. Port mirroringK. Single-root I/O virtualization Answer: C QUESTION 43You are a network administrator of an Active Directory domain named contoso.com. You have a server named Server1 that runs Windows Server 2012 R2. Server1 has the DHCP Server server role and the Network Policy Server role service installed. You enable Network Access Protection (NAP) on all of the DHCP scopes on Server1. You need to create a DHCP policy that willApply to all of the NAP non-compliant DHCP clients. Which criteria should you specify when you create the DHCP policy? A. The relay agent informationB. The client identifierC. The vendor classD. The user class Answer: D QUESTION 44Drag and Drop QuestionYour network contains an Active Directory domain named adatum.com. The domain contains a server named Server1 that runs Windows Server 2012 R2. Server1 is configured as a Network Policy Server (NPS) server and as a DHCP server. You need to log all DHCP clients that have Windows Firewall disabled. Which three actions should you perform in sequence? To answer, move the three appropriate actions from the list of actions to the answer area and arrange them in the correct order.

Actions
Create a connection request policy.
Create a network policy.
Create a remediation server group.
Create a Windows Security Health Validator (WSHV) configuration.
Create a health policy.

Answer:

Actions	Answer Area
Create a connection request policy.	Create a Windows Security Health Validator (WSHV) configuration.
Create a network policy.	Create a health policy.
Create a remediation server group.	Create a network policy.
Create a Windows Security Health Validator (WSHV) configuration.	
Create a health policy.	

QUESTION 45Your network contains an Active Directory domain named contoso.com. The domain contains a domain controller named DC1 that runs Windows Server 2012 R2. You mount an Active Directory snapshot on DC1. You need to expose the snapshot as an LDAP server. Which tool should you use? A. LdpB. NtdsutilC. ADSI EditD. Dsmain Answer: D QUESTION 46Your network contains an Active Directory forest named contoso.com. The forest contains a single domain. All domain controllers run Windows Server 2012 R2. The domain contains two domain controllers. The domain controllers are configured as shown in the following table.

Domain controller name	Server type	Scheduled task
DC1	Physical server	Daily snapshots of Active Directory
DC2	Hyper-V virtual machine	Daily snapshots of the virtual machine Daily backups of the system state

Active Directory Recycle Bin is enabled. You discover that a support technician accidentally removed 100 users from an Active Directory group named Group1 an hour ago. You need to restore the membership of Group1. What should you do? A. Perform an authoritative restore.B. Perform a non-authoritative restore.C. Recover the items by using Active Directory Recycle Bin.D. Apply a virtual machine snapshot to VM1. Answer: A QUESTION 47Your network contains an Active Directory domain named contoso.com. All domain controllers run Windows Server 2012 R2. In a remote site, a support technician installs a server named DC10 that runs Windows Server 2012 R2. DC10 is currently a member of a workgroup. You plan to promote DC10 to a read-only domain controller (RODC). You need to ensure that a user named ContosoUser1 can promote DC10 to a RODC in the contoso.com domain. The solution must minimize the number of permissions assigned to User1. What should you do? A. From Active Directory Administrative Center, pre-create an RODC computer account.B. FromNtdsutil, run the local roles command.C. FromDsmgmt, run the local roles command.D. Join DC10 to the domain. Run dsmod and specify the /server switch. Answer: A QUESTION 48Your network contains a server named Server1 that runs Windows Server 2012 R2. Server1 has the Hyper-V server role installed. Server1 hosts four virtual machines named VM1, VM2, VM3, and VM4. Server1 is configured as shown in the following table.

Hardware component	Configuration
Processor	Eight quad-core CPUs that have non-uniform memory access (NUMA)
Memory	32 GB of RAM
Disk	Two local 4-TB disks
Network	Eight network adapters VMQ-supported PCI-SIG-supported

VM2 sends and receives large amounts of data over the network. You need to ensure that the network traffic of VM2 bypasses the virtual switches of the parent partition. What should you configure? A. NUMA topologyB. Resource controlC. Resource meteringD. Virtual Machine ChimneyE. The VLAN IDF. Processor CompatibilityG. The startup orderH. Automatic Start ActionI. Integration ServicesJ. Port mirroringK. Single-root I/O virtualization Answer: K QUESTION 49Your network contains an Active Directory domain named contoso.com. The domain contains two servers named Server1 and Server2. Server1 runs Windows Server 2012 R2. Server2 runs Windows Server 2008 R2 Service Pack 1 (SP1) and has the DHCP Server server role installed. You need to manage DHCP on Server2 by using the DHCP console on Server1. What should you do first? A. From the Microsoft Management Console on Server1, add a snap-in.B. From Server Manager on Server2, enable Windows Remote Management.C. From Windows PowerShell on Server2, run Enable-PSRemoting.D. From Server Manager on Server1, install a feature. Answer: D QUESTION 50Your network contains an Active Directory domain named contoso.com. The domain contains a domain controller named dc1.contoso.com. You discover that the Default Domain Policy Group Policy objects (GPOs) and the Default Domain Controllers Policy GPOs were deleted. You need to recover the Default Domain Policy and the Default Domain Controllers Policy GPOs. What should you run? A. dcgpofix.exe /target:domainB. dcgpofix.exe /target:bothC. gpfixup.exe /oldnb:contoso/newnb:dc1D. gpfixup.exe /dc:dc1.contoso.com Answer: B QUESTION 51Hotspot QuestionYou have a server named Server1 that runs Windows Server 2012 R2. The volumes on Server1 are configured as shown in the following table.

Volume name
Volume1
Volume2
Volume3
Volume4

A new corporate policy states that backups must use Windows Azure Backup whenever possible. You need to identify which backup methods you must use to back up Server1. The solution must use Windows Azure Backup whenever possible. Which backup type should you identify for each volume? To answer, select the appropriate backup type for each volume in the answer area.

www.passleader.com
Answer Area

Volume1
Windows Azure Backup
Windows Server Backup

Volume2
Windows Azure Backup
Windows Server Backup

Volume3
Windows Azure Backup
Windows Server Backup

Volume4
Windows Azure Backup
Windows Server Backup

Answer: www.passleader.com
Answer Area

Volume1
Windows Azure Backup
Windows Server Backup

Volume2
Windows Azure Backup
Windows Server Backup

Volume3
Windows Azure Backup
Windows Server Backup

Volume4
Windows Azure Backup
Windows Server Backup

QUESTION 52 Your network contains an Active Directory domain named contoso.com. All domain controllers run Windows Server 2012 R2. An organizational unit (OU) named OU1 contains 200 client computers that run Windows 8 Enterprise. A Group Policy object (GPO) named GPO1 is linked to OU1. You make a change to GPO1. You need to force all of the computers in OU1 to refresh their Group Policy settings immediately. The solution must minimize administrative effort. Which tool should you use? A. The Secedit command B. The Invoke-GpUpdatecmdlet C. Group Policy Object Editor D. Server Manager Answer: B

QUESTION 53 Your network contains an Active Directory domain named contoso.com. The domain contains a member server named Server1 that has the Active Directory Federation Services server role installed. All servers run Windows Server 2012. You complete the Active Directory Federation Services Configuration Wizard on Server1. You need to ensure that client devices on the internal network can use Workplace Join. Which two actions should you perform on Server1? (Each correct answer presents part of the solution. Choose two.) A. Run Enable-AdfsDeviceRegistration -PrepareActiveDirectory B. Edit the multi-factor authentication global authentication policy settings C. Edit the primary authentication global authentication policy settings D. Run Set-AdfsProxyProperties HttpPort 80 E. Run Enable-AdfsDeviceRegistration Answer: CE

QUESTION 54 Your company deploys a new Active Directory forest named contoso.com. The first domain controller in the forest runs Windows Server 2012 R2. The forest contains a domain controller named DC10. On DC10, the disk that contains the SYSVOL folder fails. You replace the failed disk. You stop the Distributed File System (DFS) Replication service. You restore the SYSVOL folder. You need to perform a non-authoritative synchronization of SYSVOL on DC10. Which tool should you use before you start the DFS Replication service on DC10? A. Active Directory Sites and Services B. Ultrasound C. Adsiedit.msc D. Frsutil Answer: C

QUESTION 55 Drag and Drop Question Your network contains an Active Directory domain named contoso.com. You need to ensure that third-party devices can use Workplace Join to access domain resources on the Internet. Which four actions should you perform in sequence? To answer,

move the appropriate four actions from the list of actions to the answer area and arrange them in the correct order.

Create an attribute store.

Create a claims provider trust.

Install and configure a Web Application Proxy.

Enable the Device Registration Service.

Install a certificate obtained from a trusted third-party certification authority (CA).

Install and configure Active Directory Federation Services (AD FS).

Answer:

Create a claims provider trust.

Create an attribute store.

Enable the Device Registration Service.

Install a certificate obtained from a trusted third-party certification authority (CA).

Install and configure Active Directory Federation Services (AD FS).

Install and configure a Web Application Proxy.

Install a certificate obtained from a trusted third-party certification authority (CA).

Install and configure Active Directory Federation Services (AD FS).

Enable the Device Registration Service.

Install and configure a Web Application Proxy.

[www.passleader.com](#)

QUESTION 56Your network contains two servers named HV1 and HV2. Both servers run Windows Server 2012 R2 and have the Hyper-V server role installed. HV1 hosts 25 virtual machines. The virtual machine configuration files and the virtual hard disks are stored in D:VM. You shut down all of the virtual machines on HV1. You copy D:VM to D:VM on HV2. You need to start all of the virtual machines on HV2. You want to achieve this goal by using the minimum amount of administrative effort. What should you do? A. From HV1, export all virtual machines to D:VM. Copy D:VM to D:VM on HV2 and overwrite the existing files. On HV2, run the New Virtual Machine wizard.B. From HV1, export all virtual machines to D:VM. Copy D:VM to D:VM on HV2 and overwrite the existing files. On HV2, run the Import Virtual Machine wizard.C. Run the Import-VM InitialReplicationcmdlet.D. Run the Import-VM cmdlet. Answer: D QUESTION 57Hotspot QuestionYour network contains an Active Directory domain named contoso.com. The domain contains a domain controller named DC1 and a member server named Server1. All servers run Windows Server 2012 R2. You install the IP Address Management (IPAM) Server feature on Server1. From the Provision IPAM wizard, you select the Group Policy Based provisioning method and enter a GPO name prefix of IPAM1. You need to provision IPAM by using Group Policy. What command should you run on Server1 to complete the process? To answer, select the appropriate options in the answer area.

Answer Area

Import-Gpo

Invoke-IpamGpoProvisioning

Invoke-IpamServerProvisioning

-Domain Contoso.com

-Server Server1.contoso.com

-TargetName Dc1.contoso.com

-GpoPrefixName Ipam1

Answer:

Import-Gpo

Invoke-IpamGpoProvisioning

Invoke-IpamServerProvisioning

-Domain Contoso.com

-Server Server1.contoso.com

-TargetName Dc1.contoso.com

-GpoPrefixName Ipam1

[www.passleader.com](#)

QUESTION 58Hotspot QuestionYour network contains an Active Directory domain named fabrikam.com. You implement DirectAccess. You need to view the properties of the DirectAccess connection. Which connection properties should you view? To answer, select the appropriate connection properties in the answer area.



Answer:



QUESTION 59 Your network contains an Active Directory domain named contoso.com. The domain contains servers named Server1 and Server2 that run Windows Server 2012 R2. Server1 has the Active Directory Federation Services server role installed. Server2 is a file server. Your company introduces a Bring Your Own Device (BYOD) policy. You need to ensure that users can use a personal device to access domain resources by using Single Sign-On (SSO) while they are connected to the internal network. Which two actions should you perform? (Each correct answer presents part of the solution. Choose two.) A. Enable the Device Registration Service in Active Directory. B. Publish the Device Registration Service by using a Web Application Proxy. C. Configure Active Directory Federation Services (AD FS) for the Device Registration Service. D. Install the Work Folders role service on Server2. E. Create and configure a sync share on Server2. Answer: AC QUESTION 60 Hotspot Question Your network contains an Active Directory domain named contoso.com. You install the IP Address Management (IPAM) Server feature on a server named Server1 and select Manual as the provisioning method. The IPAM database is located on a server named SQL1. You need to configure IPAM to use Group Policy Based provisioning. What command should you run first? To answer, select the appropriate options in the answer area.

Answer Area

<div>Invoke-IPAMGpoProvisioning</div> <div>Remove-IPAMServerInventory</div> <div>Set-IPAMConfiguration</div> <div>Uninstall-WindowsFeature</div> <div>Update-IPAMServer</div>	<div>-ComputerName</div> <div>-DatabaseServer</div> <div>-Name</div> <div>-ProvisioningMethod</div>	<div>Automatic</div> <div>Contoso.com</div> <div>Ipam</div> <div>Sql1</div>
---	---	---

www.passleader.com

Answer:

Answer Area

Invoke-IPAMGPOProvisioning

Remove-IPAMServerInventory

Set-IPAMConfiguration

Uninstall-WindowsFeature

Update-IPAMServer

-ComputerName

-DatabaseServer

-Name

-ProvisioningMethod

Automatic

Contoso.com

IPAM

Sql1

Download Free 70-417 PDF Dumps From Google Drive:
https://drive.google.com/open?id=0B-ob6L_QjGLpfjYjYU1pUIVQdlpWV0dXUlljZVVhWmJUa0pZbVVBdzZYSllIN3ktT1VMUIk
(Explanation For Every Question Is Available!) PassLeader 70-417 VCE Dumps Screenshots:

PassLeader Premium 70-417 VCE

☐ Mark

Question 10 of 454 (Exam A, Q236)

Your network contains an Active Directory domain named contoso.com. The domain contains six domain controllers as shown in the following table.

Domain controller name	Operating system	FSMO role
DC1	Windows Server 2008 R2	PDC emulator
DC2	Windows Server 2012 R2	Schema master
DC3	Windows Server 2008 R2	Infrastructure master
DC4	Windows Server 2008 R2	Domain naming master
DC5	Windows Server 2008 R2	RID master
DC6	Windows Server 2012 R2	None

The network contains a server named Server1 that has the Hyper-V role installed. Server1 hosts a virtual machine named VM1.

You need to ensure that you can clone DC6.

Which FSMO role should you transfer to DC2?

☐ A. Rid master

☐ B. Domain naming master

☐ C. PDC emulator

☐ D. Infrastructure master

Previous

Next

Review

PassLeader Premium 70-417 VCE Dumps Preview

☐ Mark

Question 11 of 454 (Exam A, Q129)

Instructions

HOTSPOT

Your network contains an Active Directory domain named contoso.com.

You need to identify whether the Company attribute replicates to the global catalog.

Which part of the Active Directory partition should you view?

To answer, select the appropriate Active Directory object in the answer area.

ADSI Edit

File Action View Help

ADSI Edit

RootDSE [CONT-DC1.contoso.com]

RootDSE

Schema [CONT-DC1.contoso.com]

CN=Schema,CN=Configuration,DC=contoso,DC=com

ForestDNSZones [CONT-DC1.contoso.com]

DC=ForestDNSZones,DC=contoso,DC=com

DomainDNSZones [CONT-DC1.contoso.com]

DC=DomainDNSZones,DC=contoso,DC=com

Configuration [CONT-DC1.contoso.com]

CN=Configuration,DC=contoso,DC=com

Default naming context [CONT-DC1.contoso.com]

Download New 70-417 VCE Dumps From PassLeader: <http://www.passleader.com/70-417.html> (New Questions Are 100% Available and Wrong Answers Have Been Corrected!!!)

Output as PDF file has been powered by [[Universal Post Manager](#)] plugin from [www.ProfProjects.com](#)

/ Page 8/8 /